

Hirundo

Develop - Solution Design - Manufacture

Passive Optical Solutions



Connectivity Series



Hirundo Optics Inc
2nd Floor, Building 6, #16 Xinfu Road, Southern Cable Industrial Park,
Rongli Ronggui Street, Shunde District, Foshan city, Guangdong 528305 China



www.hirundo-link.com



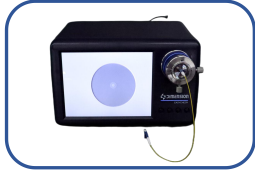
Contents

3	Application Scenario
4-5	LC UNIBOOT Products
6	Optical Performance

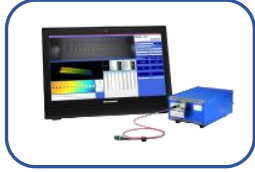
Connectivity Product

- **LC UNIBOOT Products**
- **Fiber Optic Patch Cable**
- **MTP/MPO Trunk Cable**
- **MTP/MPO-LC Breakout Cable**

Application Scenario



Fiber Endface Inspector



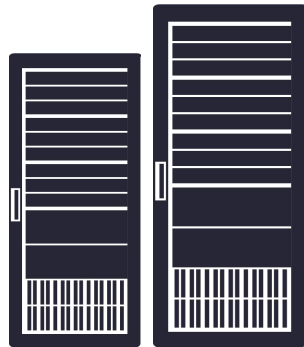
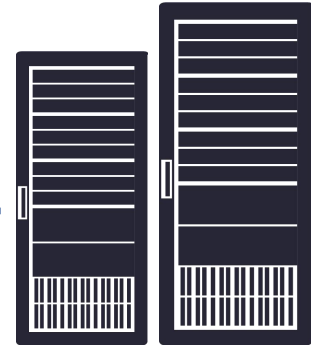
3D Interferometer Tester



IL & RL Tester



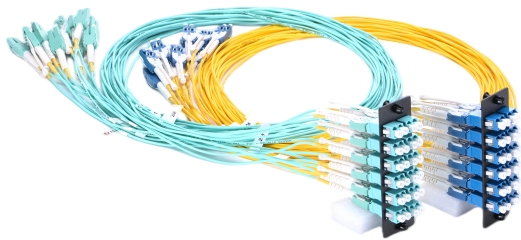
● MPO-LC Cassette



● MTP-LC Patch Cable



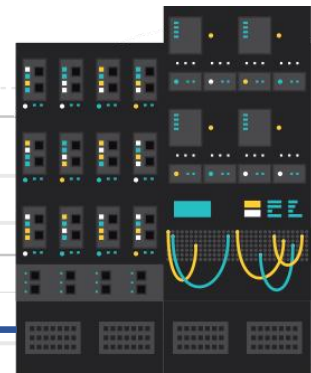
● MPO/MTP Cable



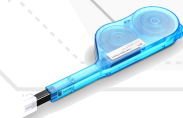
● Mutifiber Cable



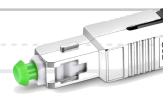
● Rack Mounted Patch Panel



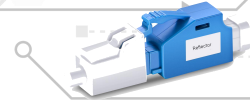
Patch Cable



Cleaner

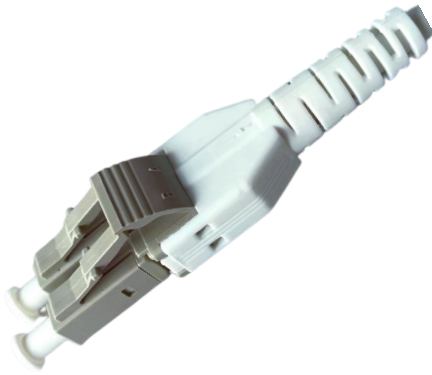


Attenuator

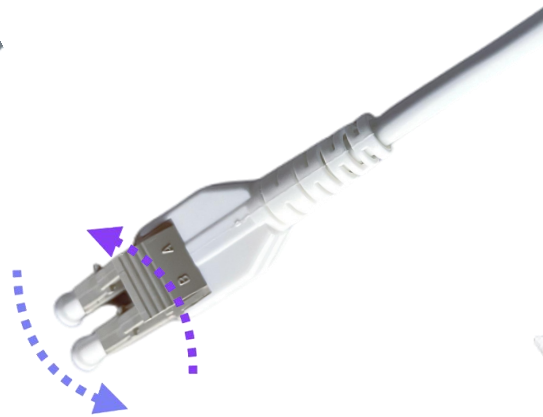


Adapter

LC UNIBOOT Products



Standard Type



Polarity Switchable Type



Push-Pull Tab Type



Reduce Space
UP to
50%



Features

- Easy polarity
- SM/MM, PC/APC available
- Telecordia-GR-326-CORE compliant
- RoHS and UL94-V0 inflammability grade compliant

Application

- Data center
- 10G/40G/100G networks

Standard Compliance



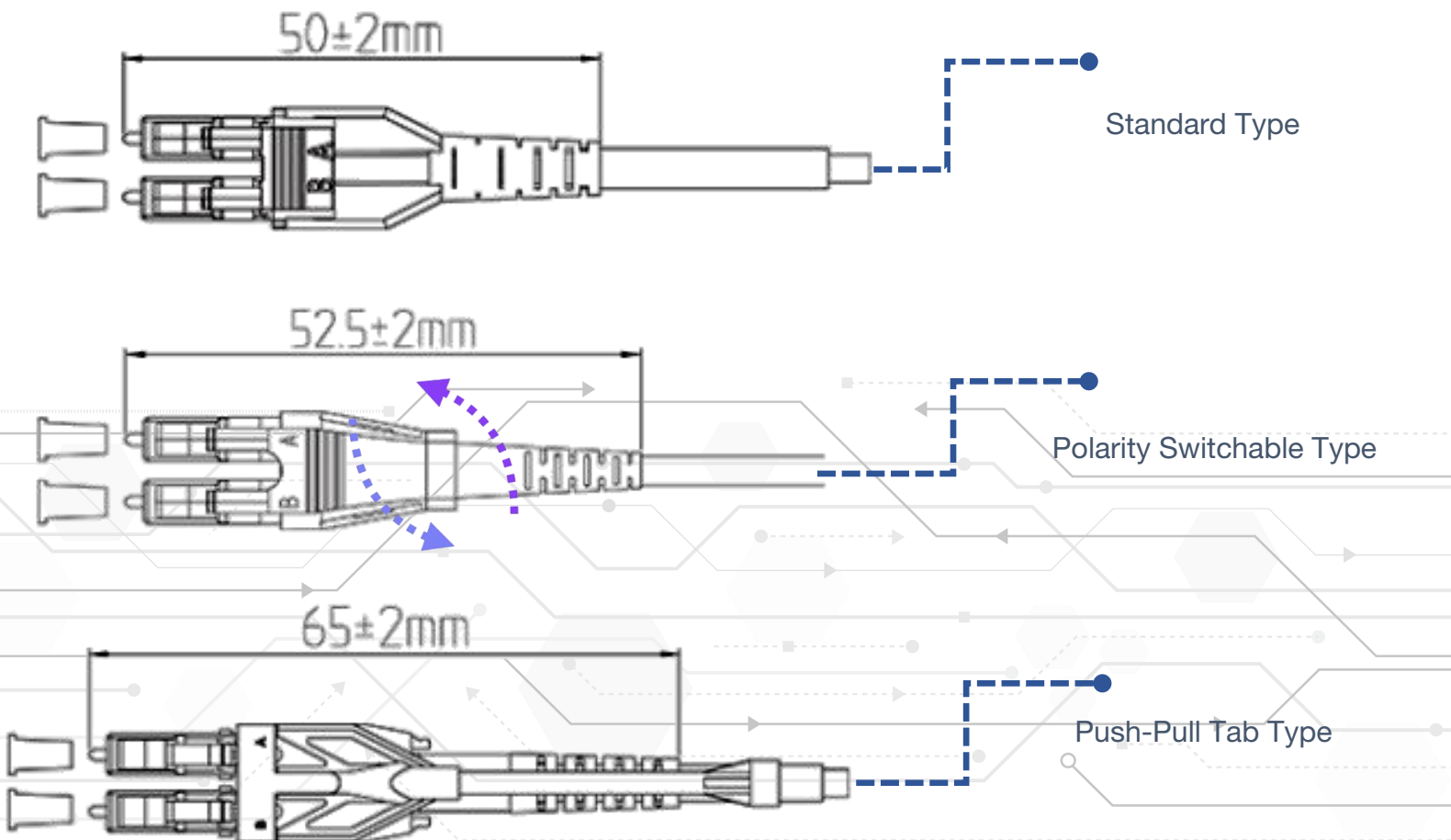
Optical Performance

LC UNIBOOT Products

Specification

Parameters	Specifications
Connector Type	LC Uniboot
Polishing	SM:UPC/APC; MM:UPC
Ferrule Type	GradeA zirconia ceramic ferrule
Matching Cable Outer Diameter	Single tube dual fiber:2.0mm/3.0mm
Fiber Type	OS2/OM1/OM2/OM3/OM4/OM5
Insertion Loss	≤0.25dB
Return Loss	SM:UPC≥50dB/APC≥60dB
	MM:UPC≥25dB

Drawing



Optical Performance

Fiber Optic Patch Cable

Parameters	Specifications		Unit
Connector Type	LC/SC/ST/FC/LSH/MTRJ/MU with Standard Boots; LC 12mm/18mm with Short Boots; SC 25mm with Short Boots		/
Fiber Mode	SM	MM	/
Polish Type	UPC-UPC; UPC-APC; APC-APC;	UPC-UPC	
Fiber Type	SMF: G.657.A1/G.657.A2; PM Fiber	OM1/OM2/OM3/O4/OM5	/
Operating Wavelength	1260-1650	850&1300	nm
Test Wavelength	1310/1550	850/1300	nm
Insertion Loss	≤0.30	≤0.30	dB
Return Loss	≥50	≥30	dB
Cable Outside Diameter	Duplex: 1.6/2.0/3.0mm, Simplex: 0.9/2.0/3.0mm		/
Cable Jacket	PVC (Riser/OFNR)/LSZH/Plenum (OFNP)		°C

MPO/MTP Trunk Cable

Parameters	Specifications	Unit
Connector Type	MTP® Female, Male; MPO Female, Male	/
Fiber Count	8- 144 Fibers	/
Fiber Mode	Single Mode: OS2 9/125µm Multimode: OM3/OM4/OM5 50/125µm	/
Insertion Loss	≤0.35	dB
Return Loss	≥20	dB
Exchangeability	≤0.3	dB
Cable Jacket	Low Smoke Zero Halogen (LSZH)/ Riser (PVC)/ Plenum (OFNP)	dB
Fiber Type	OS2 9/125µm SM, OM3/OM4/OM5	/
Polarity	TIA-568-C.3 A, B, C	/

MPO-LC Breakout Patch Cable

Parameters	Specifications	Unit	
MPO Connector Type	MTP® Female, Male; MPO Female, Male	/	
Insertion Loss	MPO	≤0.35	dB
	LC/UPC	≤0.15	dB
Return Loss	≥45	dB	
Exchangeability	≤0.3	dB	
Durability	< 0.2 (500Matings,per EIA-455-21A)	dB	
Operating Temperature	-40 ~ 85	°C	
Fiber Mode	Single Mode: OS2 9/125µm Multimode: OM3/OM4/OM5 50/125µm	/	