

PLC Splitter Series



Passive Optical Solutions

Contact Us

2nd Floor, Building 6, #16 Xinfu Road, Southern Cable Industrial Park, Rongli Ronggui Street, Shunde District, Foshan city, Guangdong 528300 China.





PLC Splitter Series

Contents

P 4 Application

P 5-7 Feature PLC Splitter Summary

P 8-11 Optical Performance

P 12-13 Quality Assurance



PLC Splitter Product

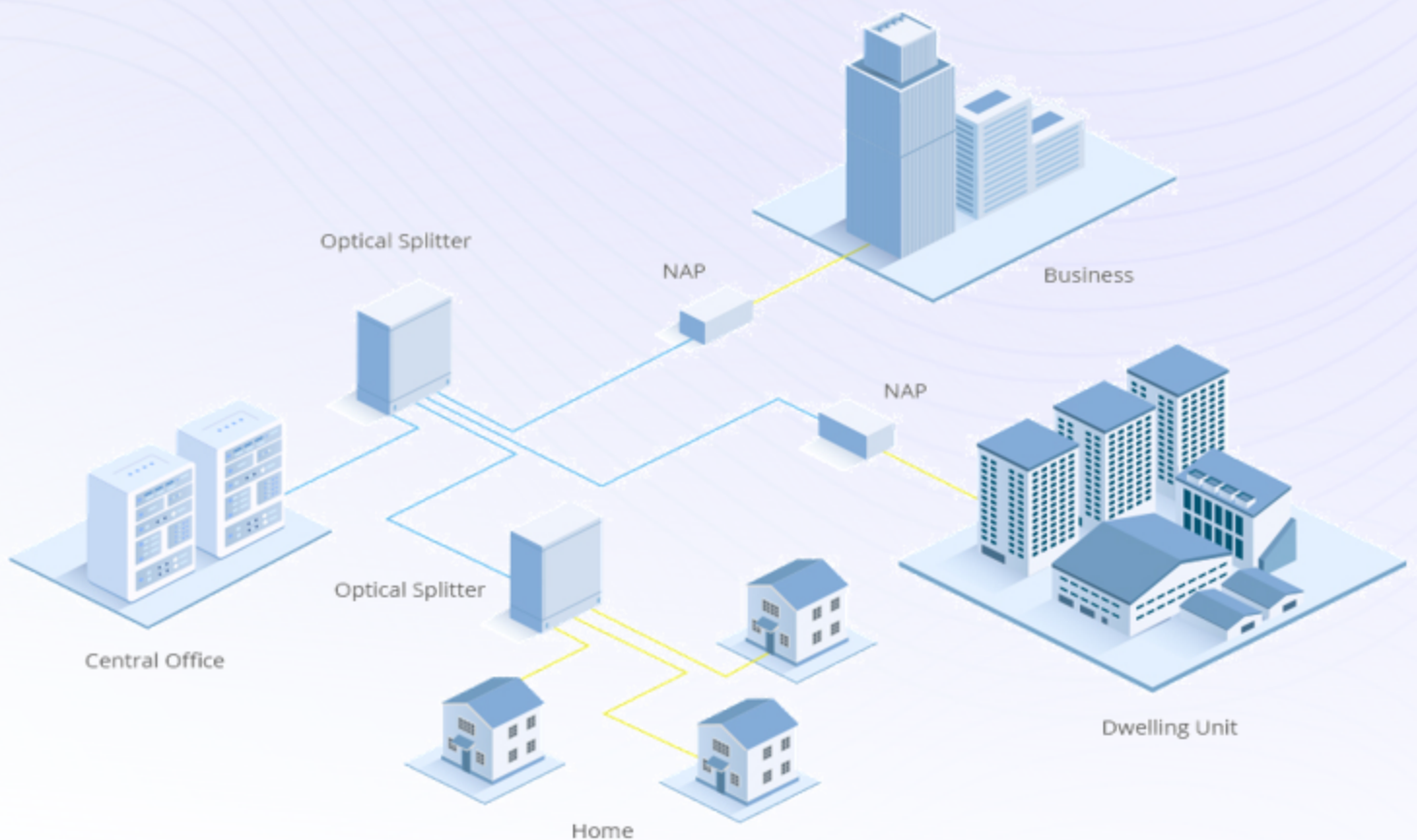
- 1xN & 2xN PLC Splitter
- 1 x N Multi-Mode PLC Splitter
- 1xN & 2xN PM PLC Splitter
- High Power PLC Splitter
- Special Wavelength PLC Splitter





PLC Splitter Application

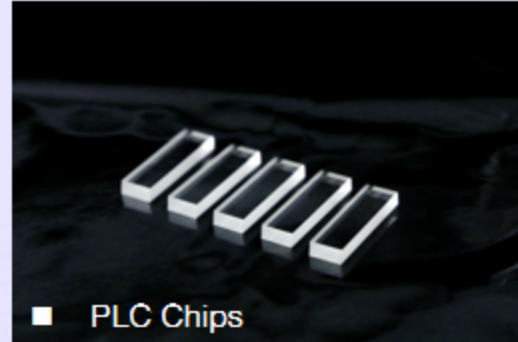
- Telecommunication sector
- PON System
- FTTH
- CATV
- Video Transmission



Feature PLC Splitter Summary

1

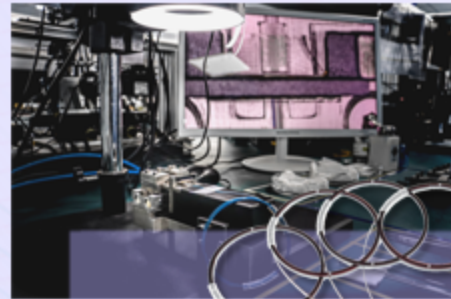
Accurate Laser dicing
for PLC Chips



2

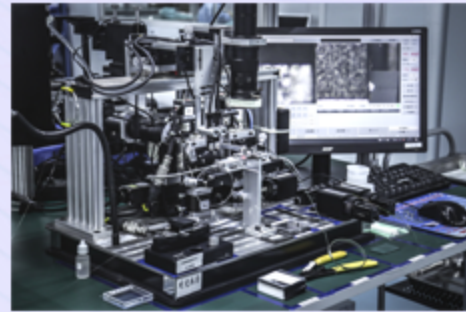


High Accuracy
Fiber Array
Assembly



3

Automation Coupling



4

Automation Testing &
Traceability Test
System



**Barcode
Tracking
System**



■ Various Package Types

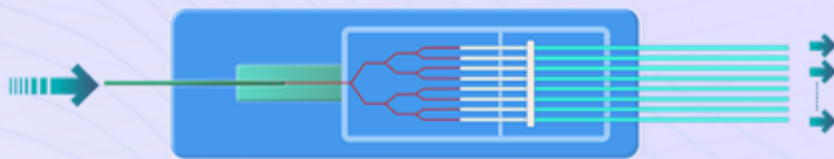
Support various steel package to suit high density and flexibility demands

- 40*4*4
- 50*7*4, 50*4*4
- 60*12*4, 60*7*4

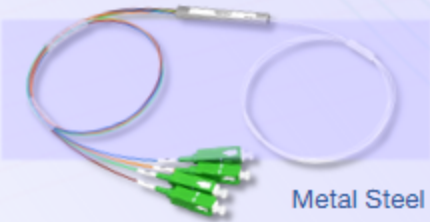
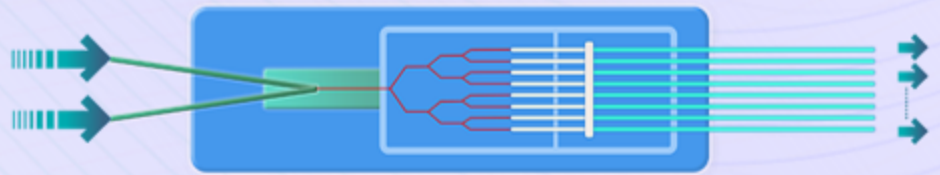
- 80*20*6, 80*12*4
- 100*40*6, 100*20*6



■ Typical Steel Package Size



1xN PLC : 1x2...1x128;
2xN PLC : 2x2...2x128;



Metal Steel



ABS Box



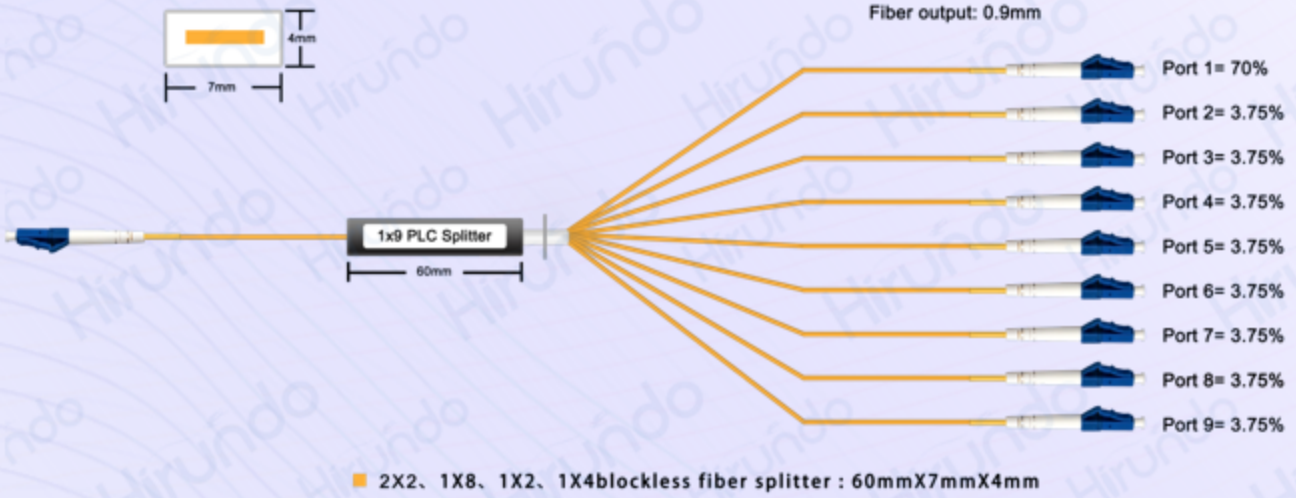
LGX Cassette



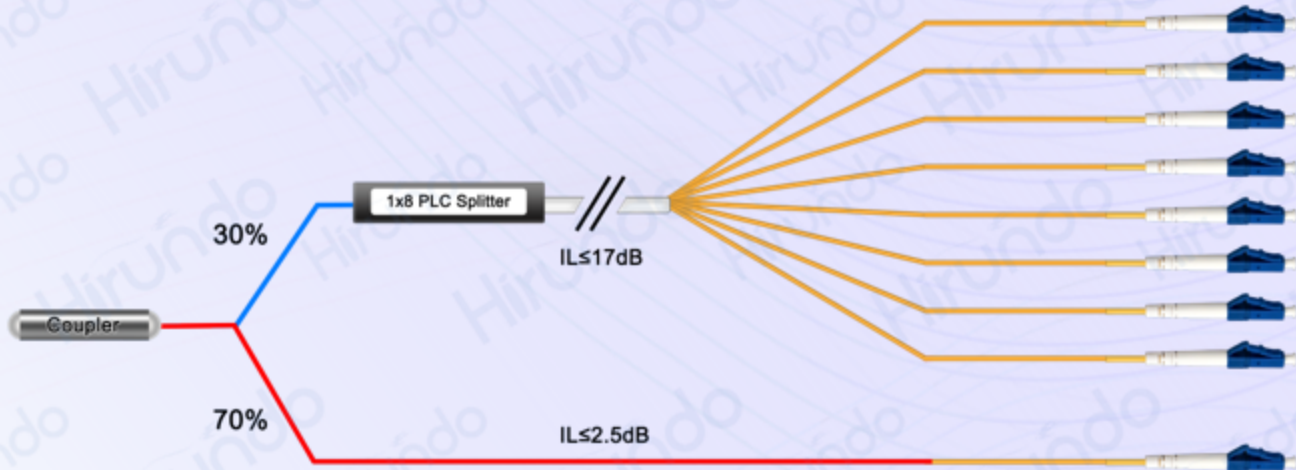
Rack Module

■ PLC Splitter Solution

Custom OEM&ODM



■ Uneven Splitting Ratio Solution



■ Coupler Hybrid PLC Splitter

Optical Performance

1×N PLC Splitter

Parameters	Unit	Specifications						
		1×2	1×4	1×8	1×16	1×32	1×64	1×128
Operating Wavelength	nm	1260~1650						
Fiber Type	/	G657A1 or Customize						
Insertion Loss	dB	3.8/4.0	7.2/7.4	10.3/10.7	13.5/13.7	16.5/16.9	20.5/21	23.8/24.2
Uniformity	dB	≤0.4	≤0.6	≤0.8	≤1.0	≤1.5	≤2.0	≤2.5
Polarization Dependent Loss	dB	≤0.2	≤0.2	≤0.2	≤0.3	≤0.3	≤0.4	≤0.4
Wavelength-related losses	dB	≤0.5	≤0.5	≤0.5	≤0.5	≤1.0	≤1.0	≤1.0
Return Loss	dB	≥55						
Directivity	dB	≥55						
Fiber Length	m	1.5 or Customize						
Temperature stability	dB	≤0.5						
Optical Average Power	mW	500						
Operating Temperature	°C	-20~+80						
Storage Temperature	°C	-40~+85						

2×N PLC Splitter

Parameters	Unit	Specifications						
		2×2	2×4	2×8	2×16	2×32	2×64	2×128
Operating Wavelength	nm	1260~1650						
Fiber Type	/	G657A1 or Customize						
Insertion Loss	dB	3.9/4.2	7.3/7.6	10.5/11	14.4/14.6	17.4/17.9	21/21.5	24.5/25
Uniformity	dB	≤0.6	≤1.0	≤1.2	≤1.5	≤1.8	≤2.2	≤2.5
Polarization Dependent Loss	dB	≤0.2	≤0.2	≤0.2	≤0.3	≤0.3	≤0.4	≤0.4
Wavelength-related losses	dB	≤0.5	≤0.5	≤0.5	≤0.5	≤1.0	≤1.0	≤1.0
Return Loss	dB	≥55						
Directivity	dB	≥55						
Fiber Length	m	1.5 or Customize						
Temperature stability	dB	≤0.5						
Optical Average Power	mW	500						
Operating Temperature	°C	-20~+80						
Storage Temperature	°C	-40~+85						



Optical Performance

1×N PM PLC Splitter

Parameters	Unit	1x2	1x3	1x4	1x6	1x8	1x12	1x16	1x24	1x32	1x64
Operating Wavelength	nm	1310 or 1550									
Insertion Loss _{1,2,3,4}	dB	≤3.9	≤6.2	≤7.2	≤9.4	≤10.4	≤12.6	≤13.7	≤15.8	≤16.8	≤21
Loss Uniformity _{1,2,3,4}	dB	≥0.4	≤0.5	≤0.6	≤0.6	≤0.8	≤0.8	≤1.2	≤1.1	≤1.5	≤2.5
Return Loss ^{1,2}	dB	≥55									
PDL ^{1,2}	dB	≤0.1									
PER	dB	≥20	≥20	≥20	≥20	≥18	≥18	≥18	≥18	≥18	≥16
Directivity	dB	≥55									
Connector Type	/	FC/APC、FC/PC、SC/APC、SC/PC、LC/APC、LC/PC									
Pigtail Length	m	Customer Requirement									
Fiber Type	/	SM15/13-PS-U25 Fujikura or YOFC & CORNING PM Fiber									

2×N PM PLC Splitter

Parameters	Unit	2x2	2x4	2x8	2x16	2x32
Operating Wavelength	nm	1310 or 1550				
Insertion Loss _{1,2,3,4}	dB	≤4.2	≤7.8	≤11.2	≤14.2	≤17.3
Loss Uniformity _{1,2,3,4}	dB	≥0.6	≤1.2	≤1.4	≤1.8	≤2.0
Return Loss ^{1,2}	dB	≥55				
PDL ^{1,2}	dB	≤0.1				
PER	dB	≥20	≥20	≥18	≥18	≥16
Directivity	dB	≥55				
Connector Type	/	FC/APC、FC/PC、SC/APC、SC/PC、LC/APC、LC/PC				
Pigtail Length	m	Customer Requirement				
Fiber Type	/	SM15/13-PS-U25 Fujikura or YOFC & CORNING PM Fiber				

Optical Performance

1×N Muti-Mode PLC Splitter

Parameters	Unit	Specifications					
		1×2	1×3	1×4	1×6	1×8	1×16
Operating Wavelength	nm	650~1350, or On Request					
Fiber Type		50/125 or 62.5/125 um Multi-Mode Fiber					
Insertion Loss	dB	3.7	5.8	7	9.4	10.5	14
Uniformity	dB	≤0.6	≤0.8	≤1.0	≤1.2	≤1.5	≤1.8
Polarization Dependent Loss	dB	≤0.1	≤0.1	≤0.1	≤0.1	≤0.1	≤0.15
Return Loss	dB	≥40 or On Request					
Directivity	dB	≥50					
Fiber Length	m	1.5 or On Request					
Temperature stability	dB	≤0.5					
Optical Average Power	mW	500					
Operating Temperature	°C	-40~+85					
Storage Temperature	°C	-40~+85					

Optical Performance

High Power PLC Splitter

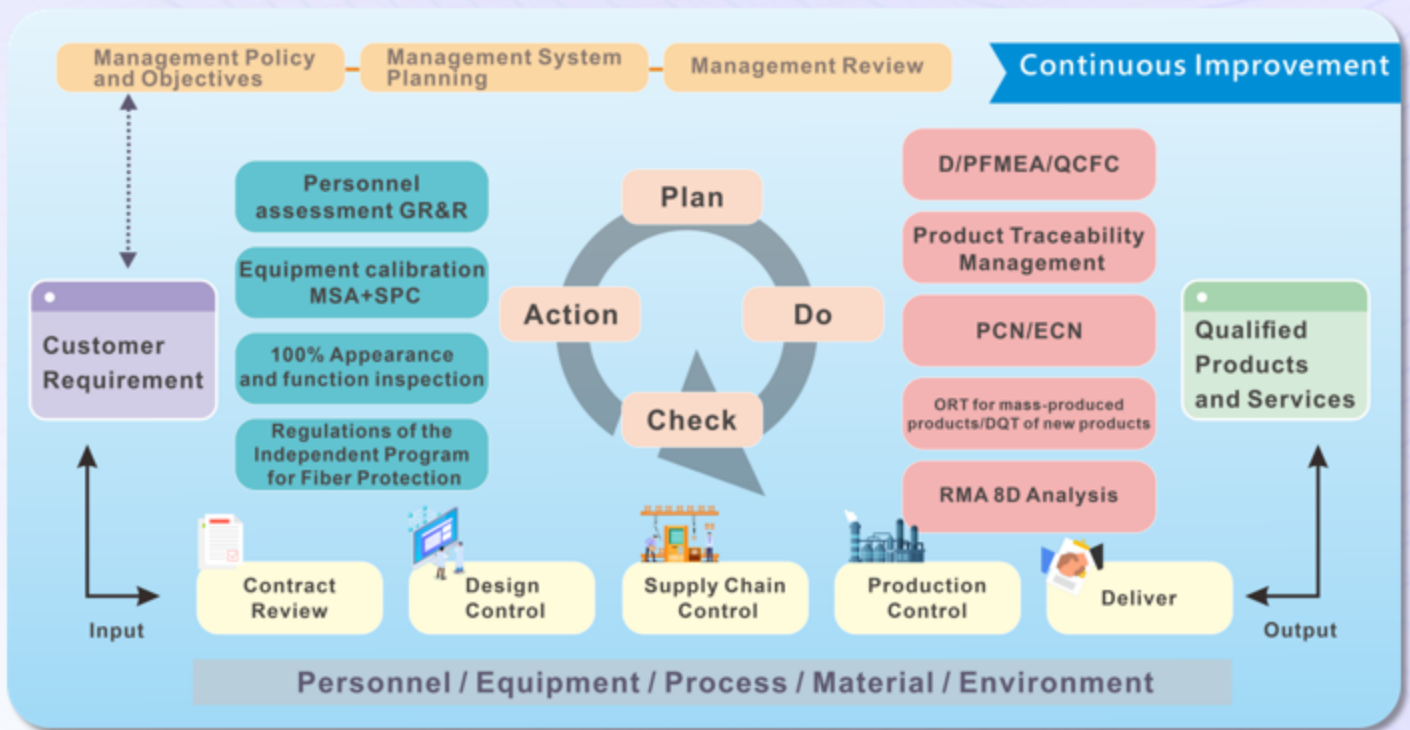
Parameters	Unit	(1x8) Specifications
Coupling Ratio	/	Even
Operating Wavelength	nm	1544-1560
Test Wavelength	nm	1550
Insertion Loss	dB	≤11.5
Uniformity	dB	≤1.5
Max Input Power	W	2 (Input the laser only from one channel input side)
Operating Temperature	°C	-40~+85
Storage Temperature	°C	-40~+85

Special Wavelength PLC Splitter

Parameters	Unit	(1x8) Specifications
Coupling ratio	/	Even
Operating Wavelength	nm	1060
Insertion Loss	dB	≤10.5
PDL	dB	≤0.2
Uniformity	dB	≤1.0
Directivity	dB	≥50
Return Loss	dB	≥50
Fiber Type	/	Hi1060 (or PM980) Fiber
Operating Temperature	°C	-40~+85
Storage Temperature	°C	-40~+85

Quality Assurance

Hirundo adheres to the quality policy of "pioneering and enterprising, teamwork; continuous improvement, customer satisfaction". From the beginning of its establishment, it has strictly followed the ISO9001:2015 standard, and established a set of management systems in which all departments cooperate with each other and operate standardizedly, from front-line employees to management. Fully implement the cornerstone of "6S" on-site management, start with the six elements of man-machine-material method environmental testing, use the PDCA-based cycle management model, use integrated quality tools in the product realization process, improve the personnel training mechanism, and promote all members to maintain common values and Fulfill the commitment to customer quality.



Quality Assurance

Equipment Guarantee

In order to ensure the output of high-quality products, Hirundo's self-built laboratories that meet GR standards, such as temperature cycling 10° C/min, double 85 high temperature and high humidity, high temperature 260 degrees, low temperature -70 degrees equipment to achieve high and low temperature storage, HAST High temperature and high pressure water boiling, mechanical tension bending and twisting, etc. Mechanical vibration and shock commissioned a third-party inspection also available if necessary.



temperature circulation
test & Humidity Chamber



Constant Temperature &
Humidity Chamber



Industrial
oven



PCT- Pressure Cooker
Test Chamber



Tensile Test Machine



Scan for more product info

www.hirundo-link.com

Factory in Foshan

Building 6, #16 Xinfu Road, Southern Cable Industrial Park, Rongli Ronggui Street,
Shunde District, Foshan city, Guangdong 528305 China
+86-757-26619220 Marketing@hirundo-link.com

R&D Center in Shenzhen

4th Industrial Zone, heshuikou community, Matian street, Guangming District,
Shenzhen city, Guangdong province, China
+86-18144751541 Marketing@hirundo-link.com